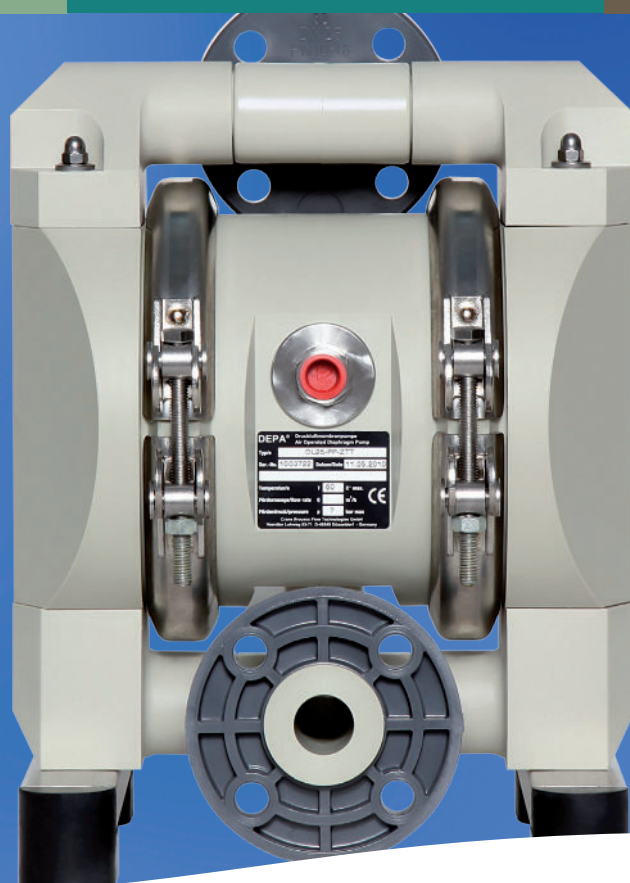


DEPA[®]

brands you trust.



Technical Datasheet DEPA[®] Series P Type PP/PL/PM

CRANE[®]

Crane ChemPharma & Energy

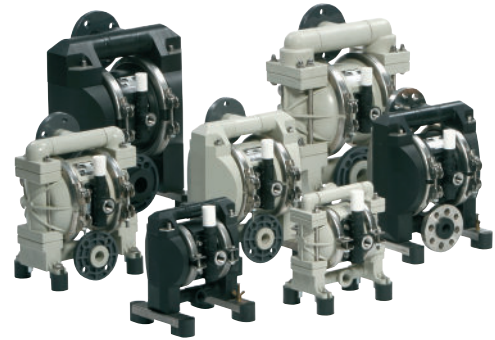
www.depapumps.com
www.cranecpe.com

Features and Benefits

DEPA® Air Operated Double Diaphragm Pumps Series – Type PP/ PL/ PM are made of solid plastic and were developed for pumping corrosive products in the chemical industry.

Key Features

- ❶ **The simple, modular and robust pump set-up** reduces downtimes to a minimum.
- ❷ **The chemically resistant polypropylene** enables the conveyance of corrosive products
- ❸ **Equipped with internal air valve and closed surface diaphragms** without an additional diaphragm plate



Sizes

DEPA® Air Operated Double Diaphragm Pumps made of plastic are available in the product connection sizes ½" (DL15), 1" (DL25), 1 ½" (DL40), 2" (DL50) and 3" (DL80).

| Type | 15 (½") | 25 (1") | 40 (1½") | 50 (2") | 80 (3") |
|---------|------------|------------|-------------|------------|------------|
| DLxx-PP | ● | ● | ● | ● | ● |
| DLxx-PL | ● | ● | ● | ● | - |
| DLxx-PM | ● | ● | ● | - | - |

| | Size | | | | |
|--------------------------|--------------|-----|-------------|-----|-----|
| | 15 | 25 | 40 | 50 | 80 |
| Suction lift (m), dry | 3,5 (PM 2,5) | 5,5 | 5,8(PM 5,5) | 5,8 | 6 |
| Suction lift (m), wet | 9,5 | 9,5 | 9,5 | 9,5 | 9,5 |
| Max. size of solids (mm) | 3,5 (PM 2,5) | 4 | 6 | 8 | 10 |
| Weight (kg) DLxx-PP | 5 | 10 | 17 | 34 | 75 |
| Weight (kg) DLxx-PL | 5 | 10 | 17 | 37 | - |
| Weight (kg) DLxx-PM | 6 | 8,4 | 13 | - | - |

Applications

- Chemical industry
- Galvanic and coating
- Paints and varnish
- Pulp and paper industry
- Pharmaceutical industry
- Mechanical and plant engineering
- Power plants and waste disposal technology

Features and Benefits

Temperature

Housing temperature 0° to +60 °C

| Product wetted interior | Temperature range (°C) |
|--|------------------------|
| NBR | -15 to +90 |
| EPDM | -25 to +105 |
| NRS | -15 to +70 |
| FKM* | -5 to +120 |
| DEPA nopped S ⁴ ® Santoprene® | -20 to +110 |
| PTFE | -20 to +100 |
| PTFE Compound | -10 to +130 |

*a diaphragm based on Viton™ fluoroelastomer, Viton™ is a registered trademark of The Chemours Company

Applied Guidelines

- Machinery Directive 2006/42/EC



Marking and Identification

The pumps are provided with a nameplate including pump code, serial number, date of manufacturing, max. allowed temperature and pressure.

The DEPA® pump coding gives all information about size, material and equipment which allow accurate linkage for linkage to spare parts.



Materials and Characteristics

| | PP | PL | PM |
|---------------------------------|-----------------|---------------------------|----------------------------------|
| Product wetted housing material | Polypropylene | Polypropylene conductive | Polypropylene, injection moulded |
| Center block and air chamber | Polypropylene | Polypropylene conductive* | Polypropylene |
| Clamp band | Stainless steel | Stainless steel | Stainless steel |
| Screws | Stainless steel | Stainless steel | Stainless steel |

* Size 50 = PE1000

Pump Sizes and Equipment

DL 25 - PP - S E T

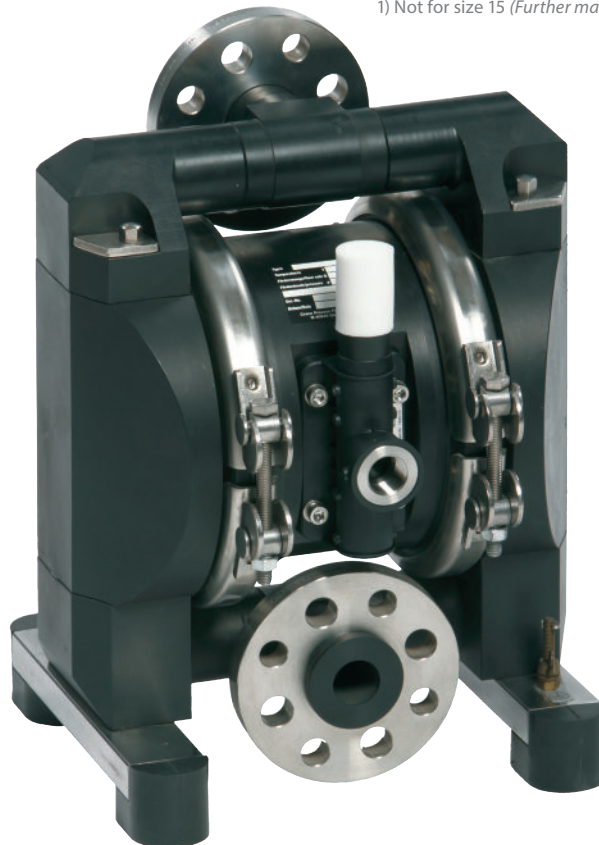
| Connection dimensions DN (mm) / inch |
|---|
| Female thread ISO 228-G1/2" |
| DIN Flange DN25 |
| DIN Flange DN40 |
| DIN Flange DN50 |
| DIN Flange DN80 |

| | Wetted Parts | Center Block |
|-----------|------------------------------------|---------------------------|
| PP | Polypropylene | Polypropylene |
| PL | Polypropylene conductive | Polypropylene conductive* |
| PM | Polypropylene injection moulded | Polypropylene |

* Size 50 = PE1000

| Material Options | | | |
|----------------------------|-----------|------------|-----------------|
| Material | Diaphragm | Valve Seat | Valve Ball |
| NBR | 1 | N | N ¹⁾ |
| EPDM | 2 | E | E ¹⁾ |
| NRS | 5 | B | B ¹⁾ |
| FKM | 4 | F | - |
| EPDM grey | 3 | - | - |
| PTFE | T | T | T |
| PTFE compound diaphragm | Z | - | - |
| Stainless steel | - | R | R |
| NBR with core | - | - | Y ¹⁾ |
| NRS with core | - | - | V ¹⁾ |
| EPDM with core | - | - | W ¹⁾ |
| PTFE with core | - | - | Z ¹⁾ |

1) Not for size 15 (Further material options are available upon request)



Flexiport Dimensions

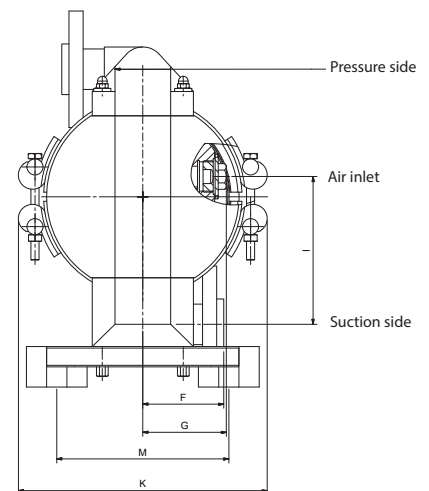
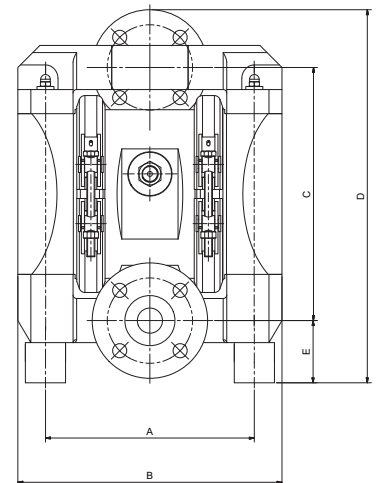
Dimensions of the different sizes:

| Designation | Type PP/PL Size (mm) | | | | |
|--|----------------------|--------|--------|--------|--------|
| | 15* | 25 | 40 | 50 | 80 |
| A | 170 | 208 | 267 | 341 | 418 |
| B | 212 | 263 | 353 | 451 | 558 |
| C | 185 | 252 | 334 | 448 | 578 |
| D | 260 | 372 | 489 | 622 | 785 |
| E | 60 | 62 | 80 | 91 | 107 |
| F | 28 | 80 | 92 | 126 | 125 |
| G | 55 | 83 | 91 | 121 | 104 |
| I | 95 | 146 | 187 | 251 | 315 |
| K | 195 | 246 | 290 | 361 | 445 |
| M | 135 | 170 | 195 | 250 | 330 |
| Air connection, internal Air Valve | G 1/4" | G 3/8" | G 3/8" | G 3/4" | G 3/4" |
| Air connection, external Air Valve (M-valve) | G 1/2" | | - | | |

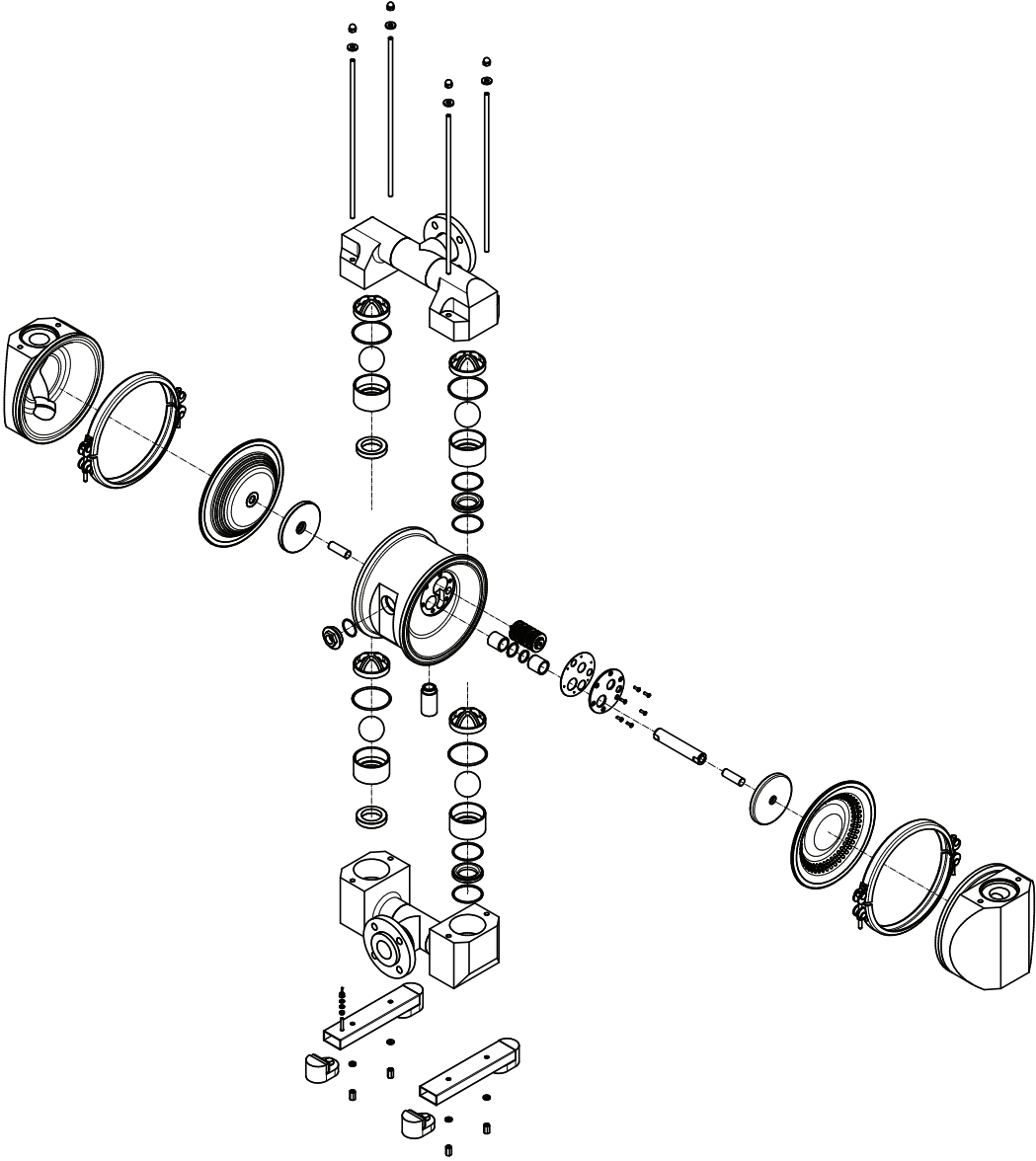
* Dimensions without flange

| Designation | Type PM Size (mm) | | |
|--|-------------------|--------|--------|
| | 15* | 25 | 40 |
| A | 170 | 208 | 267 |
| B | 212 | 266 | 349 |
| C | 183 | 250,3 | 335 |
| D | 263 | 370 | 490 |
| E | 60 | 62 | 80 |
| F | 28 | 84 | 92 |
| G | 55 | 81 | 92 |
| I | 94 | 145,15 | 185 |
| K | 174 | 246 | 290 |
| M | 112,5 | 144 | 190 |
| Air connection, internal Air Valve | G 1/4" | G 3/8" | G 3/8" |
| Air connection, external Air Valve (M-valve) | G 1/2" | | |

* Dimensions without flange



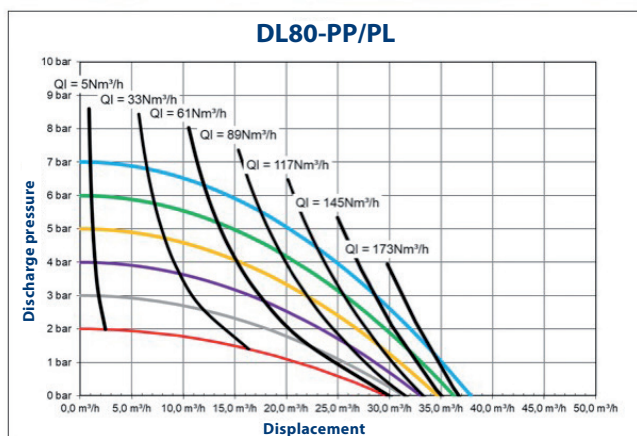
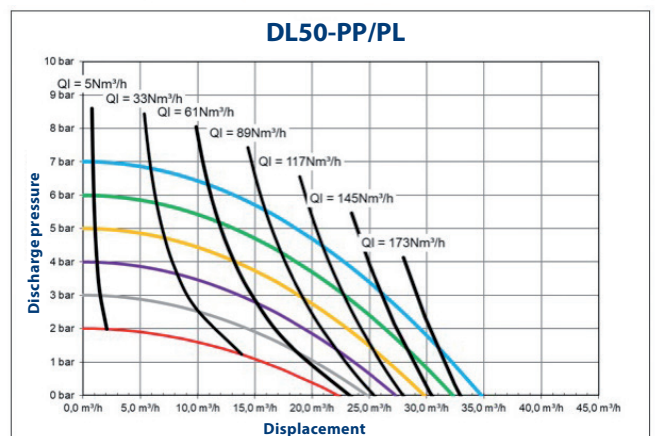
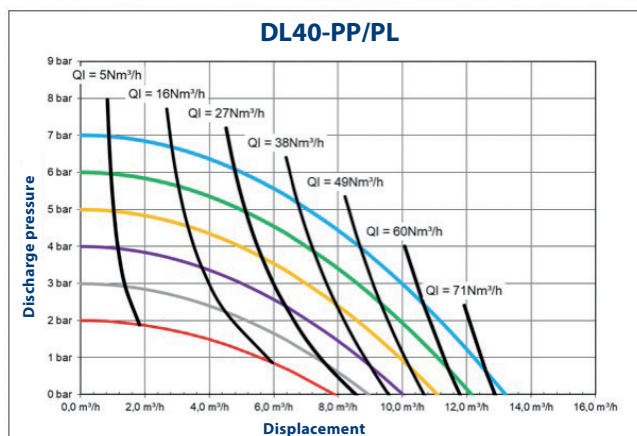
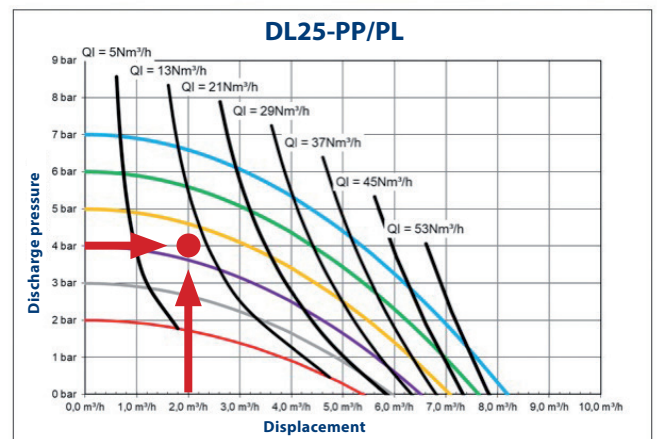
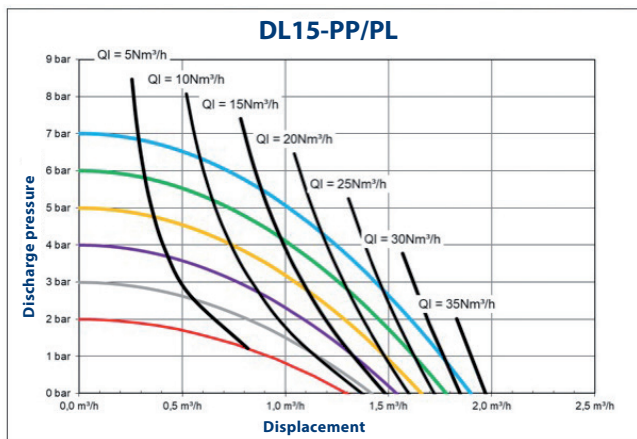
Exploded View



Performance Curves

Example for pump selection

Required is 2 m³/h as the flow rate at a discharge pressure of 4 bar. Recommend is the DL25 for this application. The needed air supply pressure is 4,3 bar. This equals an air consumption rate of 10 m³/h (between Ql = 5 m³/h and Ql = 13 m³/h).



DEPA®

Crane ChemPharma & Energy

Crane Process Flow Technologies GmbH

Heerdter Lohweg 63-71

40549 Düsseldorf, Germany

Tel.: +49 211 5956-0

E-Mail: depa@cranecpe.com

www.cranecpe.com

www.depapumps.com

CRANE®



brands you trust.



CPE-DEPA-DL-P-TD-E-A4-2020_04_15
Edition 04/2020

Crane Co., and its subsidiaries cannot accept responsibility for possible errors in catalogues, brochures, other printed materials, and website information. Crane Co. reserves the right to alter its products without notice, including products already on order provided that such alteration can be made without changes being necessary in specifications already agreed. All trademarks in this material are property of the Crane Co. or its subsidiaries. The Crane and Crane brands logotype, in alphabetical order, (ALOYCO®, CENTER LINE®, COMPAC-NOZ®, CRANE®, DEPA®, DUO-CHEK®, ELRO®, FLOWSEAL®, JENKINS®, KROMBACH®, NOZ-CHEK®, PACIFIC VALVES®, RESISTOFLEX®, REVO®, SAUNDERS®, STOCKHAM®, TRIANGLE®, UNI-CHEK®, WTA®, and XOMOX®) are registered trademarks of Crane Co. All rights reserved.